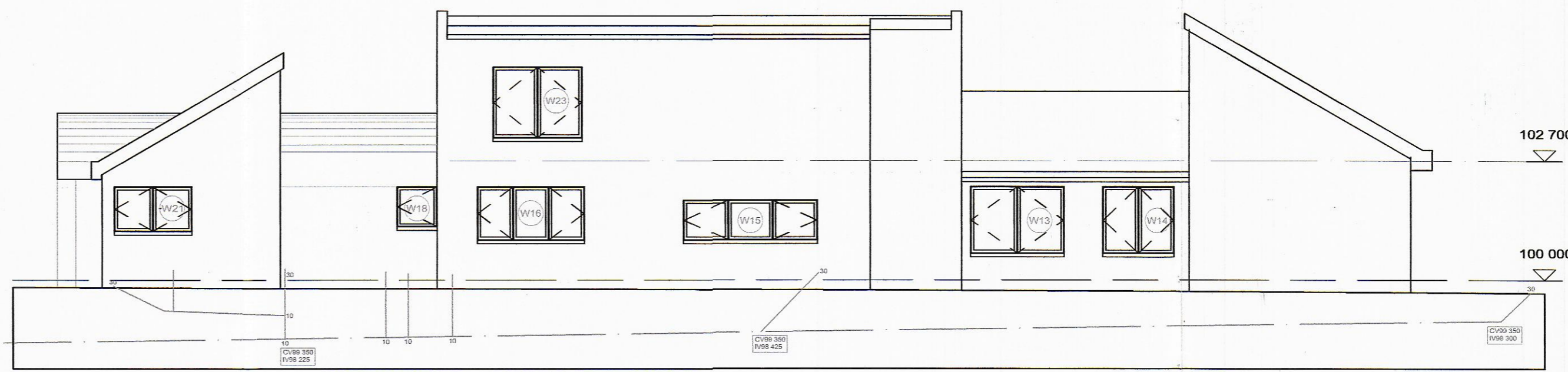
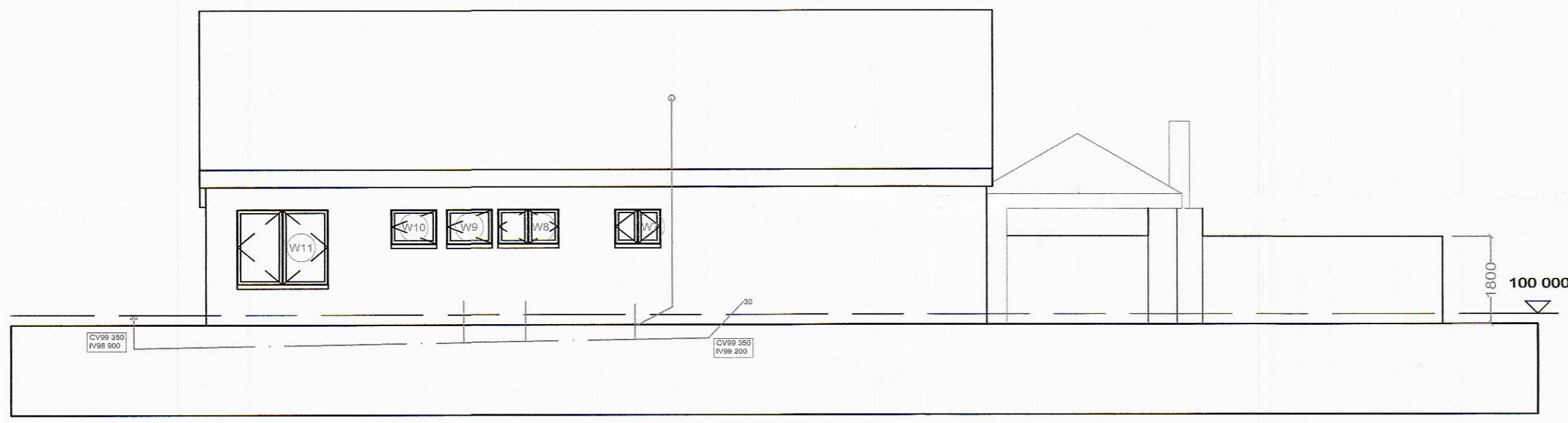




WEST ELEVATION  
1:100



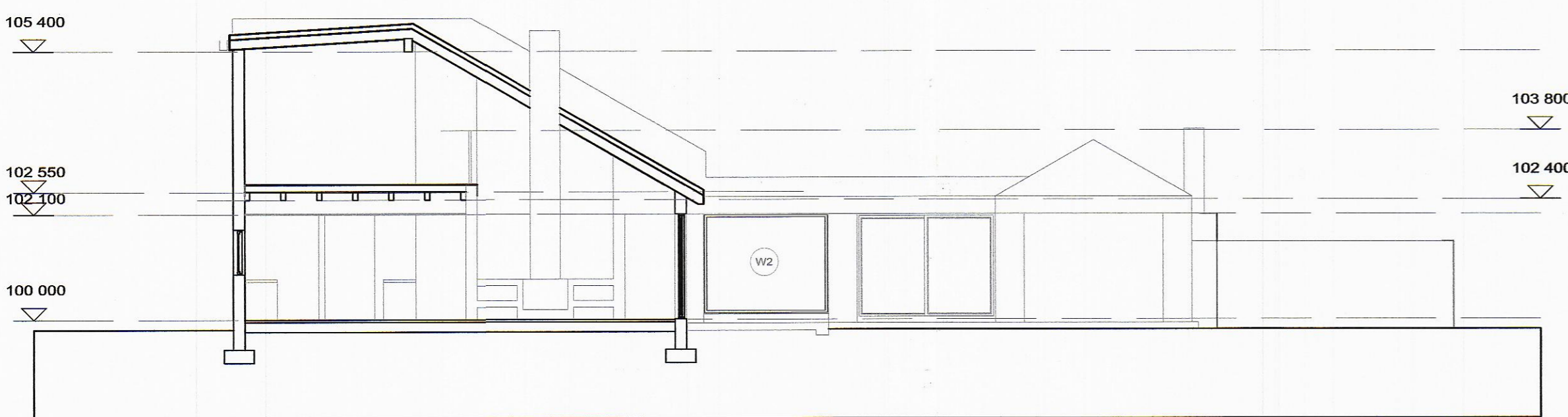
SOUTH ELEVATION  
1:100



EAST ELEVATION  
1:100



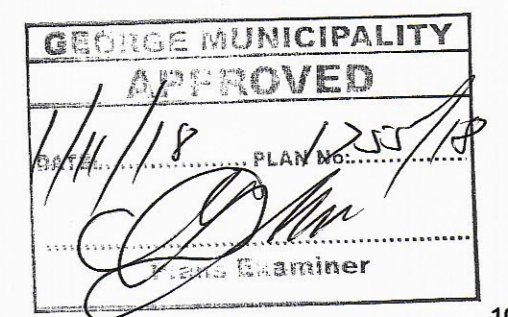
NORTH ELEVATION  
1:100



SECTION A-A  
1:100



SECTION B-B  
1:100



AREAS:

Ground floor:	339 m <sup>2</sup>
New addition:	44 m <sup>2</sup>
First floor:	47 m <sup>2</sup>
<b>TOTAL:</b>	<b>430 m<sup>2</sup></b>

**ROOF**  
Marley shingle cement tiles fixed with copper nails as to manufacturers fixing spec on 38x38 battens on 22mm T&G treated pine ceiling boards fixed to trusses at 800mm ccs with 40mm thermal blanket on 220 x 50 mm roof rafters at ccc distances as specified by roof engineer, fixed with galvanised brackets to wallplate, specification & fixing detail by Engineer.

**CONCRETE SLABS**  
Reinforced concrete slab to engineers details 5:1 sand/cement screed laid to fall to fulbore outlets with Bluthens 5300 waterproofing system fixed according to manufacturers specifications with 50mm layer of approved 13mm stone aggregate to be laid evenly on roof surfaces, Colour to Architect's specifications.

**FLOOR CONSTRUCTION**  
Floor finish as noted on floorplan, on 30mm screed, 100mm surface bed, on 250 micron usb green dpm, on 50mm sandlayer, on compacted fill in layers not exceeding 150mm to 98% AASHTO

**CONCRETE SURFACE BED**  
100mm Thick (minimum 15Mpa) cast level, a minimum of 228mm above ground level on one layer 250 micron Consol plastics gunplac USB green waterproof sheeting sealed at laps with gunplac pressure sensitive tape laid continuous under surface beds as indicated on architects and engineers drawings.  
25mm Thick river sand blinding layer on approved hardcore filling compacted to structural engineers specifications.  
Finish with 30mm cement / riversand (1:4) screed applied to a smooth and even finish to take floor finish.

**REINFORCED CONCRETE SLAB**  
To structural engineers specifications with 25mm cement / river sand (1:4) screed applied to a smooth and even finish to take floor finish

**FLOOR CONSTRUCTION**  
Floor finish as noted on floorplan, on 30mm screed, 100mm surfacebed, on 250 micron usb green dpm, on 50mm sandlayer, on compacted fill in layers not exceeding 150mm to 98% AASHTO

**FLOOR FINISH ON VERANDAH**  
Approved tile finish with fall to outside of verandah on 30mm screed, 100mm surface bed, on 250 micron usb green dpm, on 50mm sandlayer, on compacted fill in layers not exceeding 150mm to 98% AASHTO  
Concrete strip foundations & surfacebed thickening to Engineers spec.  
Foundation walls to be concrete filled to underside of 375 micron dpm in walls.  
Expansion & controe joints according to engineers spec.

**WALLS**  
Clinker brick 230mm ext walls

**WINDOWS AND DOORS**  
Purpose made timber doors and windows as per schedule  
Interior doors to be semi-solid.  
All glass used to be SABS approved.

**RAINFATER GOODS**  
Seamless aluminium - charcoal colour - square profile gutters and downpipes.

**ROOF**  
Marley shingle cement tiles fixed with copper nails as to manufacturers fixing spec on 38x38 battens on 22mm T&G treated pine ceiling boards fixed to trusses at 800mm ccs with 40mm thermal blanket on 220 x 50 mm roof rafters at ccc distances as specified by roof engineer, fixed with galvanised brackets to wallplate, specification & fixing detail by Engineer.

architect

**SCOTT ARCHITECTS**  
*Towards Sustainability*

project

ERF NO. 7591

drawing

**ELEVATIONS AND SECTIONS**

scale 1:100	drawn GS
date 2018/07/06	checked SS
drawing no. 03	revision 0