

FEATURED



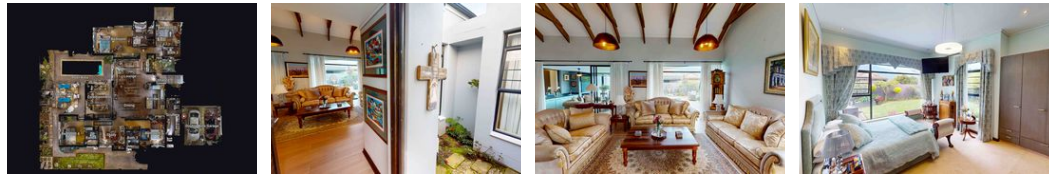
Web Ref KRL308

Johann Cronje
082 953 7120
johann@kpsgardenroute.co.za



Contact Garden Route
086 1778877

Regus Office
Shamrock Building 2nd Floor
97 York Street
George
6530



R6,495,000

4 4 2

Monthly Bond Repayment R67,040.64
Calculated over 20 years at 11% with no deposit.

Transfer Costs R597,095.00 **Bond Costs** R80,082.50
These calculations are only a guide. Please ask your conveyancer for exact calculations.

Monthly Levy R2,085 **Monthly Rates** R320

THIS IS THE 4 BEDROOM MEMORY BANK YOU'VE BEEN LOOKING FOR

Along the Garden Route you'll find houses upon houses but most likely very few fits the description of home. Explore the interactive 3D tour to this fabulous opportunity in the always sought after Earls Court Lifestyle Estate.

A home designed for optimal practicality and cognizance to often desired privacy with 2 bedrooms on either side of the house - the Master and one guest bedroom North facing and the entertainment area expansively North of course to allow for all year no-matter-what-the-weather entertainment.

The floor plan included gives essence to the detail of the lay-out with provision for a more than practical kitchen design supplemented with a gas electric oven, prep bowl with filtered water provision and a separate lockable pantry, the scullery with provision for 3 appliances crafted separately.

Bedrooms are...

Features

Pets Allowed Yes

| Interior | |
|--------------|----|
| Bedrooms | 4 |
| Bathrooms | 4 |
| Kitchens | 1 |
| Recep. Rooms | 3 |
| Studies | 1 |
| Furnished | No |

| Exterior | |
|---------------------|------|
| Garages | 2 |
| Carports / Parkings | 2 |
| Security | Yes |
| Pool | Yes |
| Views | True |

| Sizes | |
|------------|-------------------|
| Floor Size | 312m ² |
| Land Size | 876m ² |

Extras

Air Conditioning Unit Backup Water Built In Braai Carpets Covered Patio Dishwasher Connection Electric Garage