

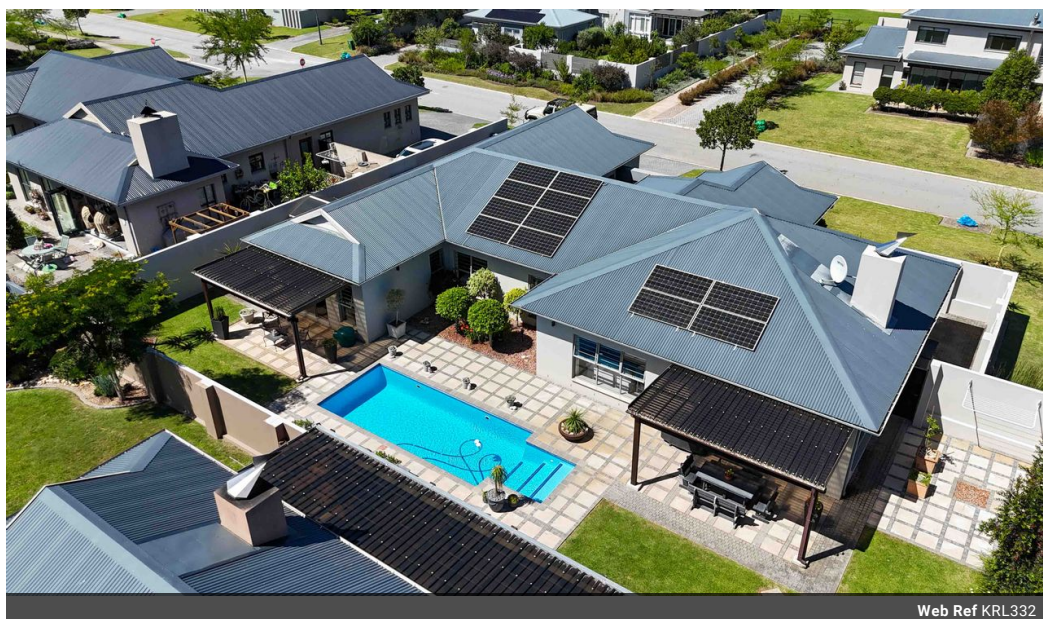


Johann Cronje
082 953 7120
johann@kpsgardenroute.co.za

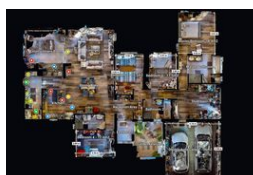
Contact Garden Route

086 1778877

Regus Office
Shamrock Building 2nd Floor
97 York Street
George
6530



Web Ref KRL332



R6,985,000

4 3 2

Monthly Bond Repayment R72,098.36

Calculated over 20 years at 11% with no deposit.

Transfer Costs R632,116.00 **Bond Costs** R70,535.00

These calculations are only a guide. Please ask your conveyancer for exact calculations.

Monthly Levy R1,876 **Monthly Rates** R1,833

Luxury Single-Storey Home in Earls Court Lifestyle Estate – Exceptional Living Awaits

Explore the enclosed 3D tour at leisure to familiarise yourself with the lay-out and features of your next home.

Situated in the prestigious Earls Court Lifestyle Estate in Heatherpark, this immaculate 282m² single-storey home presents a rare opportunity to experience luxury living in one of the Garden Route's most sought-after estates.

Biometric facial access security, beautifully landscaped gardens, wide walkways, and premium communal facilities—including braai areas, a fully equipped gym, and tennis courts—this estate embodies convenience, security, and exclusivity.

The home itself is designed for both comfort and practicality, offering 4 spacious bedrooms and 3 modern bathrooms, ensuring ample space for the whole family.

A separate studio and a standard garage add to its versatility.

The thoughtfully designed...

Features

Pets Allowed Yes

Interior

Bedrooms	4
Bathrooms	3
Kitchens	1
Recep. Rooms	3
Studies	1
Furnished	No

Exterior

Garages	2
Carports / Parkings	2
Security	Yes
Pool	Yes
Views	True

Sizes

Floor Size	282m ²
Land Size	887m ²