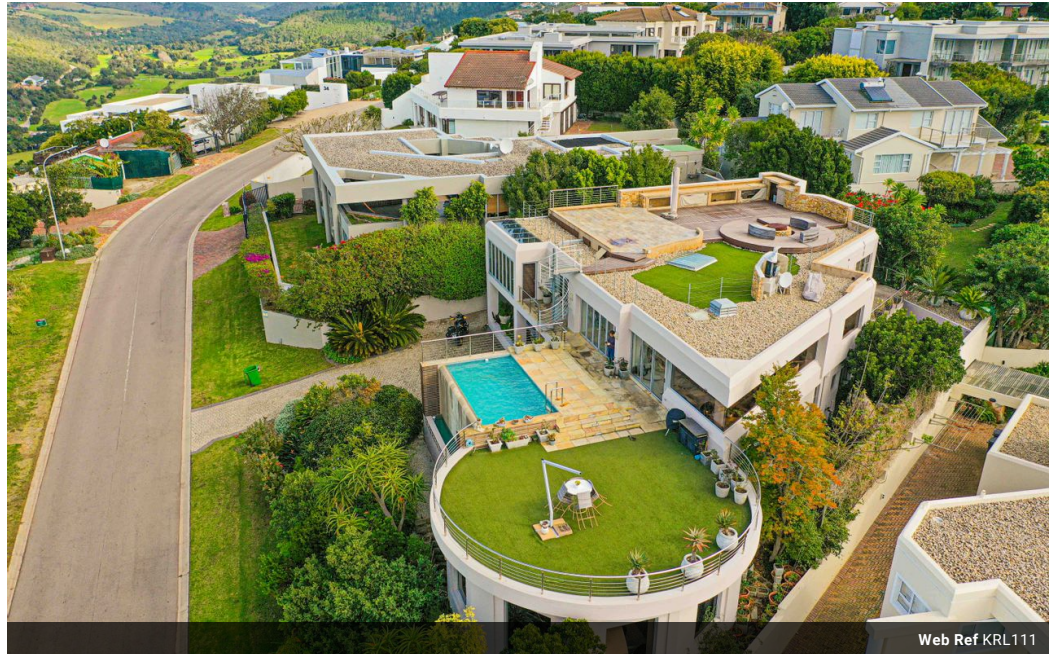




Johann Cronje
082 953 7120
johann@kpsgardenroute.co.za

Contact Garden Route
086 1778877

Regus Office
Shamrock Building 2nd Floor
97 York Street
George
6530



Web Ref KRL111



R15,000,000

6 8 4

Monthly Bond Repayment R154,828.26
Calculated over 20 years at 11% with no deposit.

Transfer Costs R1,595,059.00 **Bond Costs** R108,535.00
These calculations are only a guide. Please ask your conveyancer for exact calculations.

Monthly Rates R2,660

Exquisite Boutique Property With Panoramic View

Welcome to our exquisite boutique house nestled in the breath-taking coastal town of Plettenberg Bay.

This exceptional property boasts six spacious bedrooms, each thoughtfully designed to provide the utmost comfort and luxury. With 8 elegantly appointed bathrooms, you can indulge in the convenience and privacy during your stay. This lovely home is as well wheelchair friendly.

The kitchen has a large island that faces towards the main living area, creating a seamless flow into the other living areas which creates fantastic entertainment space for when you have friends and family over.

One of the most impressive features of this home is the view that, stretches all the way from the Tsitsikamma Mountains range straight through to Robberg Nature Reserve making it the perfect place to relax and unwind after a long day.

Perched...

Features

Pets Allowed Yes

Interior

Bedrooms	6
Bathrooms	8
Kitchens	1
Recep. Rooms	2
Studies	1
Furnished	No

Exterior

Garages	4
Security	Yes
Dom. Accom.	1
Pool	Yes
Views	True

Sizes

Floor Size	800m ²
Land Size	890m ²

Extras

24 Hour Response Air Conditioner Built In Braai Deck Granite Tops Handicap Available Outdoor Beams Open Plan Kitchen Gym Sauna Pantry Storeroom Tandem Parking Water Tanks